

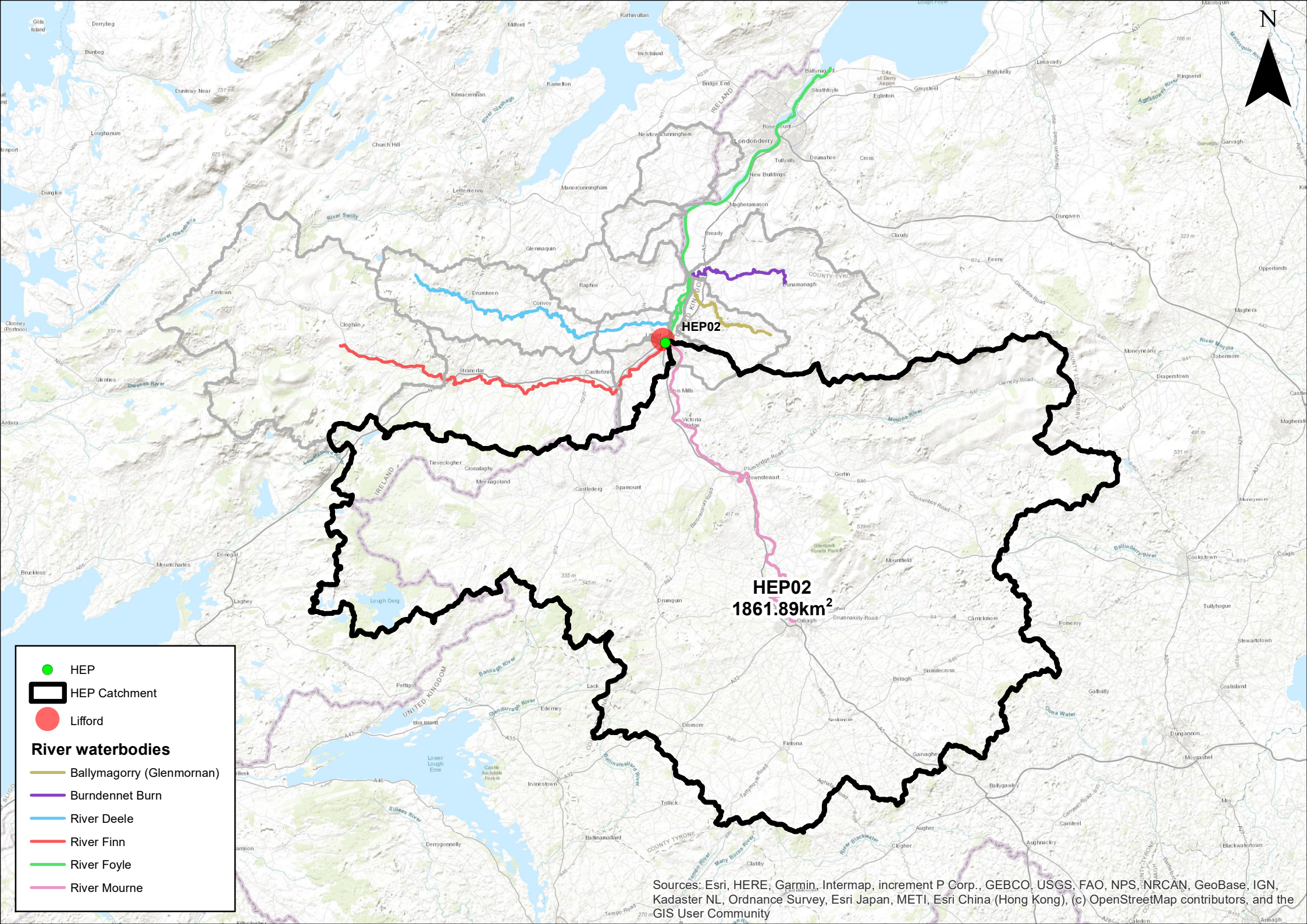
- HEP
- HEP Catchment
- Lifford

River waterbodies

- Ballymagorry (Glenmornan)
- Burndennet Burn
- River Deele
- River Finn
- River Foyle
- River Mourne

HEP01
1847.13km²

Sources: Esri, HERE, Garmin, Intermap, increment P Corp., GEBCO, USGS, FAO, NPS, NRCAN, GeoBase, IGN, Kadaster NL, Ordnance Survey, Esri Japan, METI, Esri China (Hong Kong), (c) OpenStreetMap contributors, and the GIS User Community

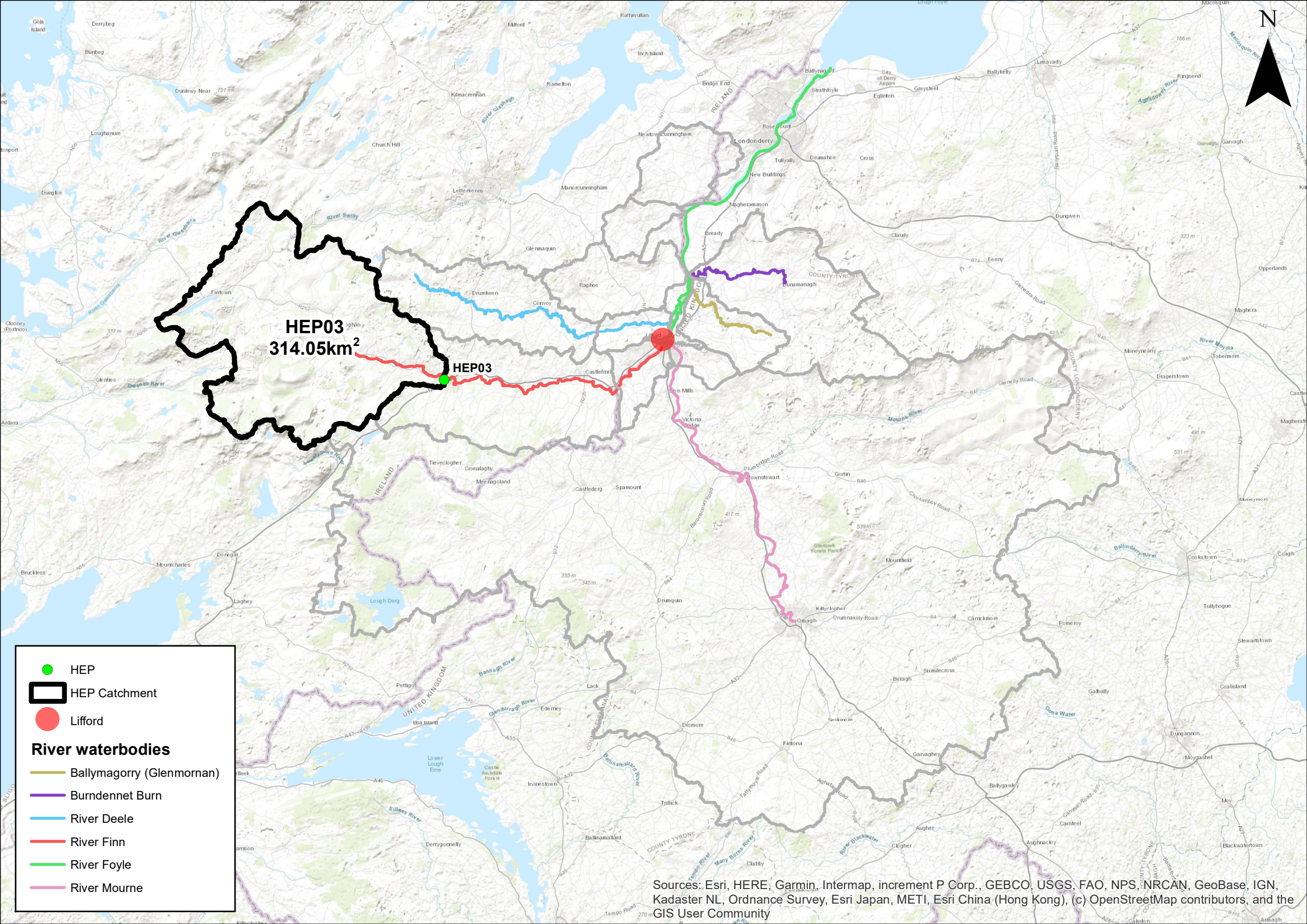


- HEP
- HEP Catchment
- Lifford

River waterbodies

- Ballymagorry (Glenmornan)
- Burndennet Burn
- River Deele
- River Finn
- River Foyle
- River Mourne

Sources: Esri, HERE, Garmin, Intermap, increment P Corp., GEBCO, USGS, FAO, NPS, NRCAN, GeoBase, IGN, Kadaster NL, Ordnance Survey, Esri Japan, METI, Esri China (Hong Kong), (c) OpenStreetMap contributors, and the GIS User Community

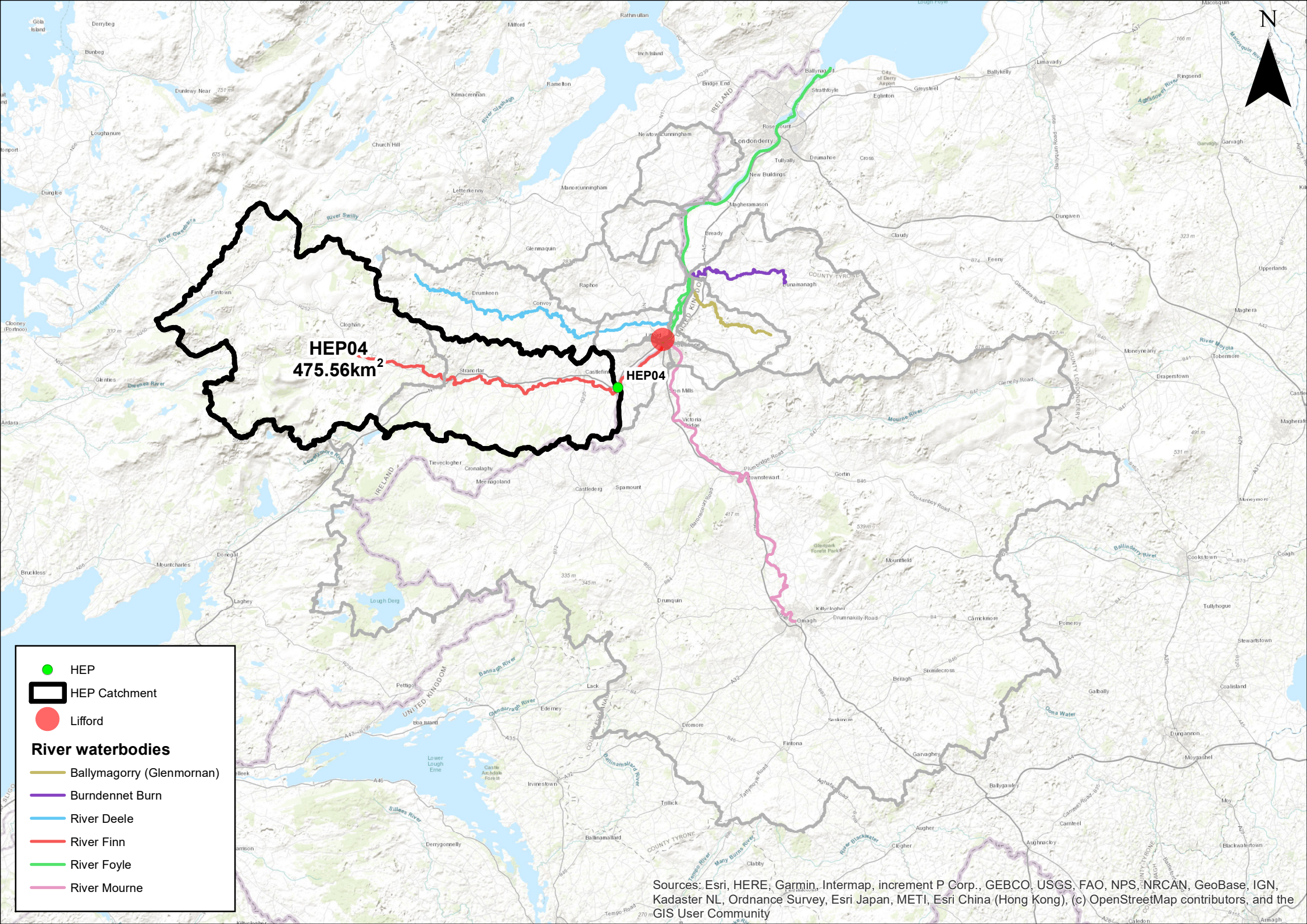


HEP03
314.05km²

HEP03










- HEP
- ▭ HEP Catchment
- Lifford
- River waterbodies**
- Ballymagorry (Glenmornan)
- Burndennet Burn
- River Deelee
- River Finn
- River Foyle
- River Mourne

Sources: Esri, HERE, Garmin, Intermap, increment P Corp., GEBCO, USGS, FAO, NPS, NRCAN, GeoBase, IGN, Kadaster NL, Ordnance Survey, Esri Japan, METI, Esri China (Hong Kong), (c) OpenStreetMap contributors, and the GIS User Community

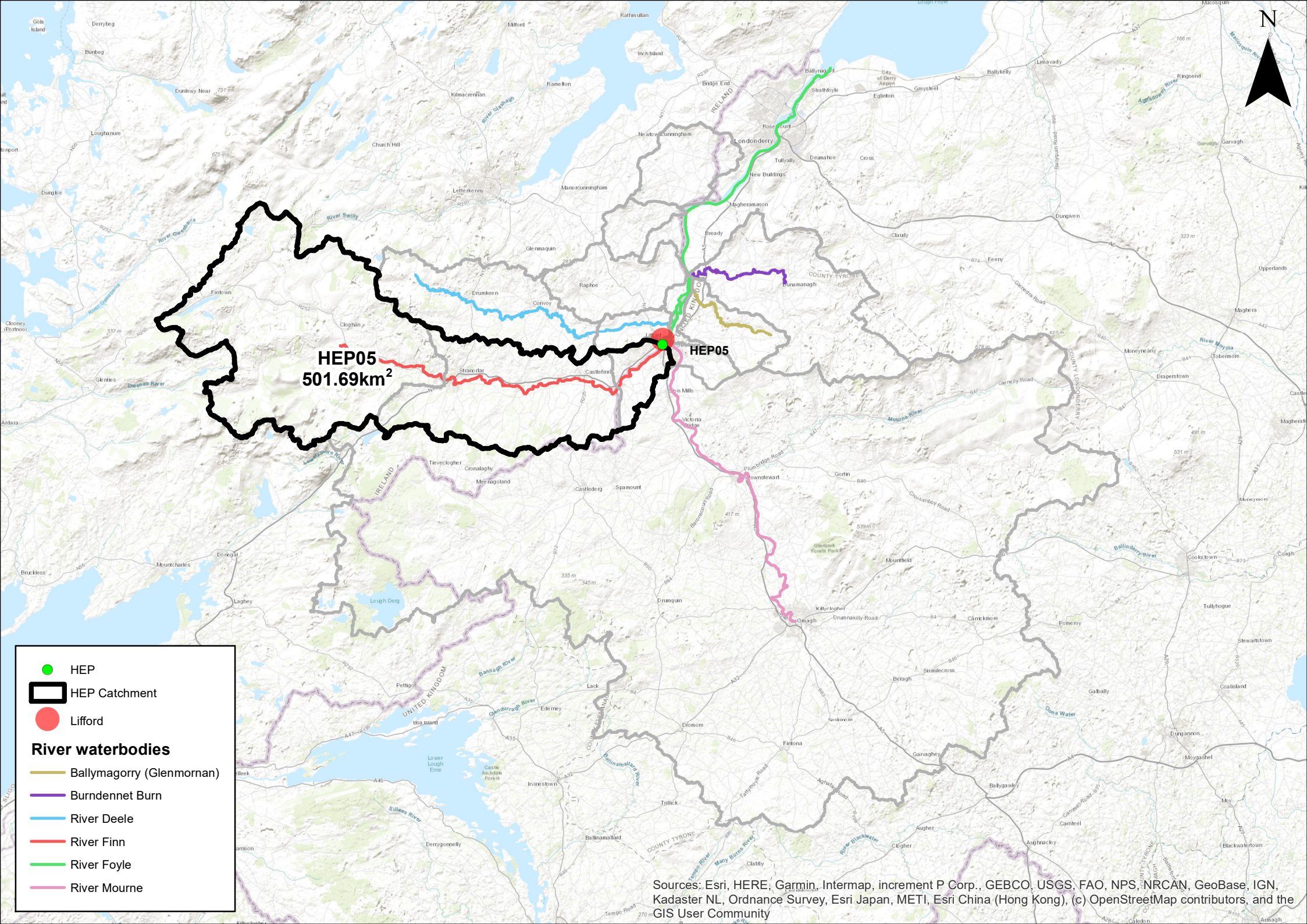


HEP04
475.56km²

HEP04

-  HEP
-  HEP Catchment
-  Lifford
- River waterbodies**
-  Ballymagorry (Glenmornan)
-  Burndennet Burn
-  River Deele
-  River Finn
-  River Foyle
-  River Mourne

Sources: Esri, HERE, Garmin, Intermap, increment P Corp., GEBCO, USGS, FAO, NPS, NRCAN, GeoBase, IGN, Kadaster NL, Ordnance Survey, Esri Japan, METI, Esri China (Hong Kong), (c) OpenStreetMap contributors, and the GIS User Community

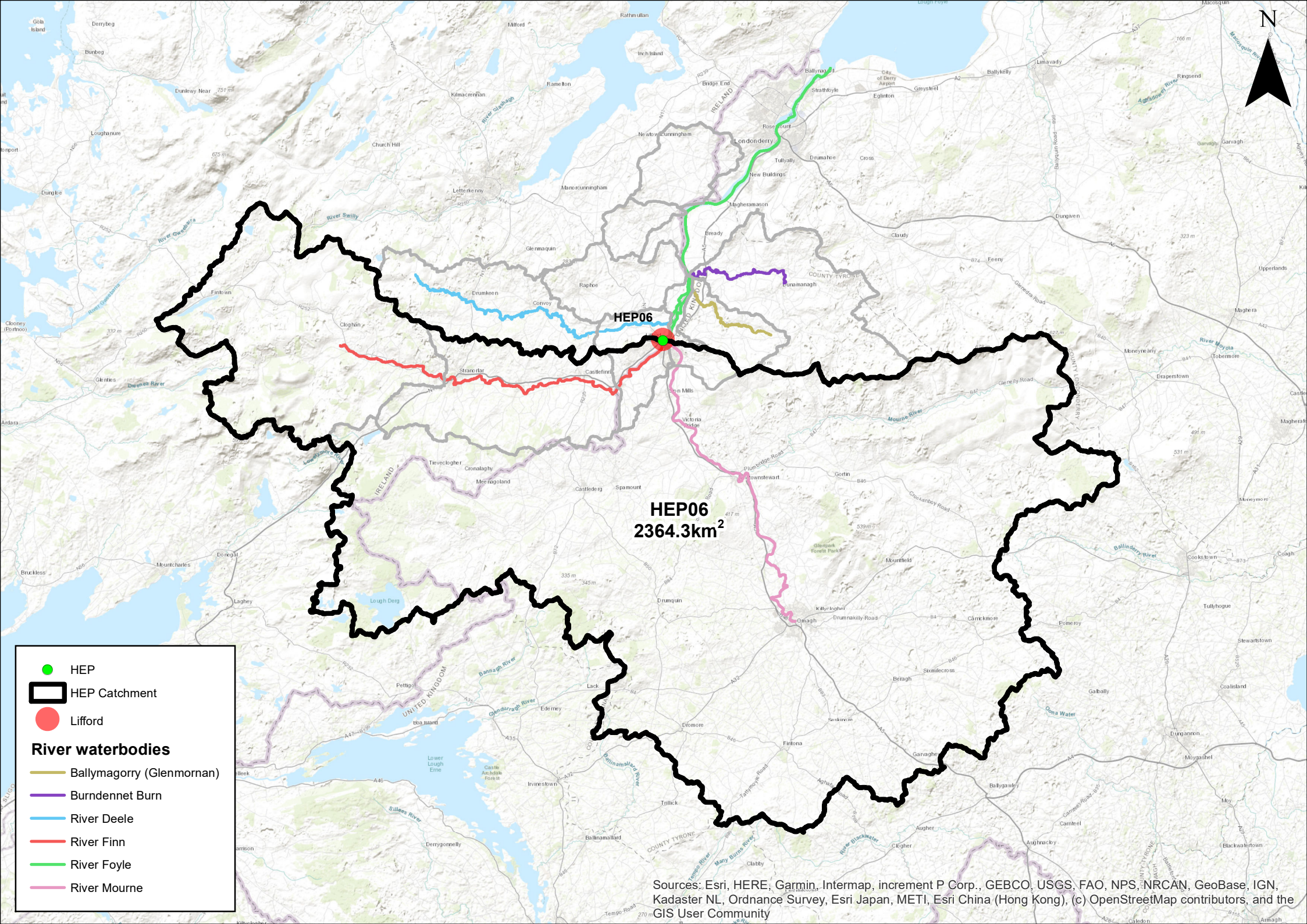


- HEP
- HEP Catchment
- Lifford

River waterbodies

- Ballymagorry (Glenmornan)
- Burndennet Burn
- River Deele
- River Finn
- River Foyle
- River Mourne

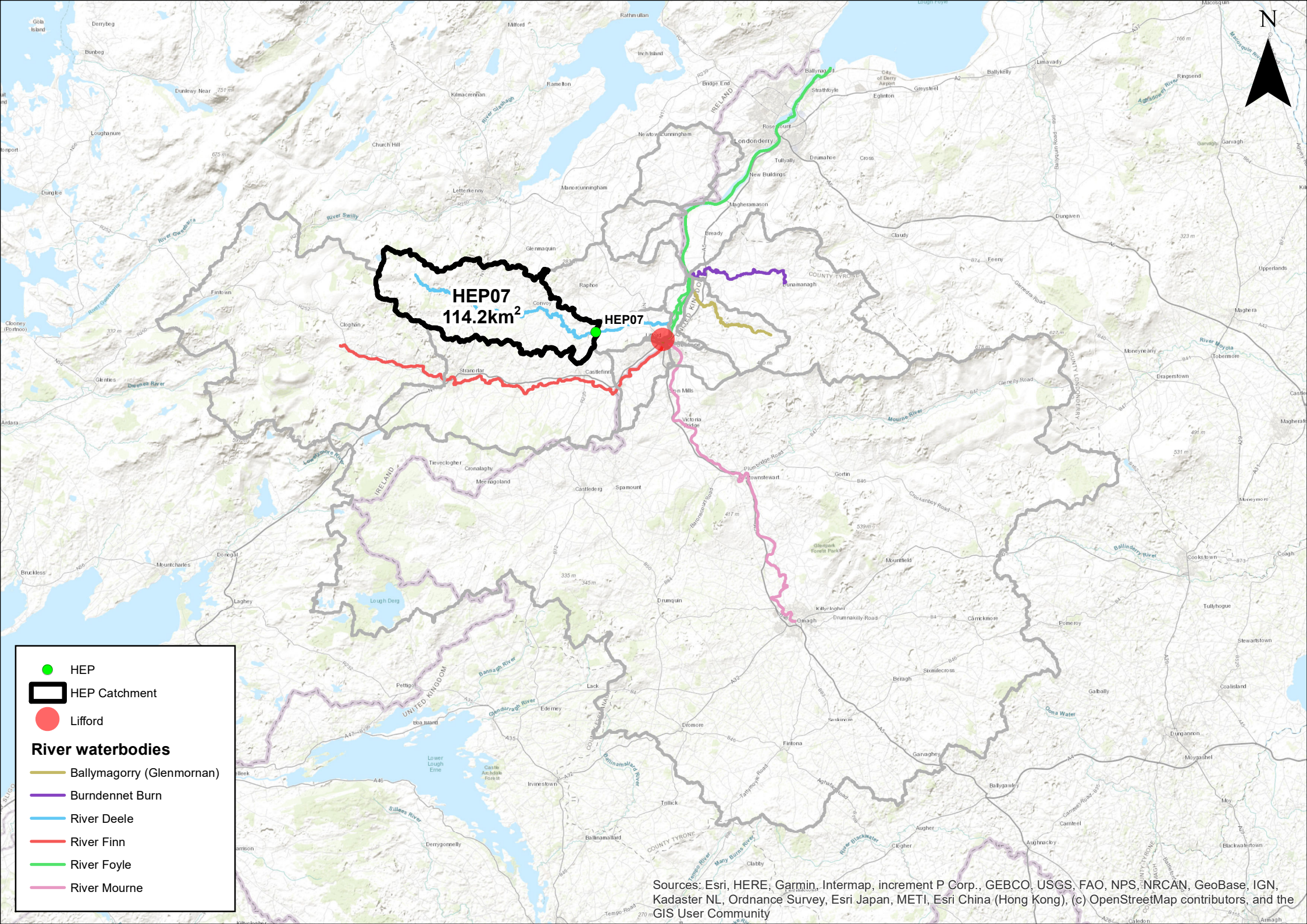
Sources: Esri, HERE, Garmin, Intermap, increment P Corp., GEBCO, USGS, FAO, NPS, NRCAN, GeoBase, IGN, Kadaster NL, Ordnance Survey, Esri Japan, METI, Esri China (Hong Kong), (c) OpenStreetMap contributors, and the GIS User Community



- HEP
 - ▭ HEP Catchment
 - Lifford
- River waterbodies**
- Ballymagorry (Glenmornan)
 - Burndennet Burn
 - River Deele
 - River Finn
 - River Foyle
 - River Mourne

HEP06

HEP06
2364.3km²

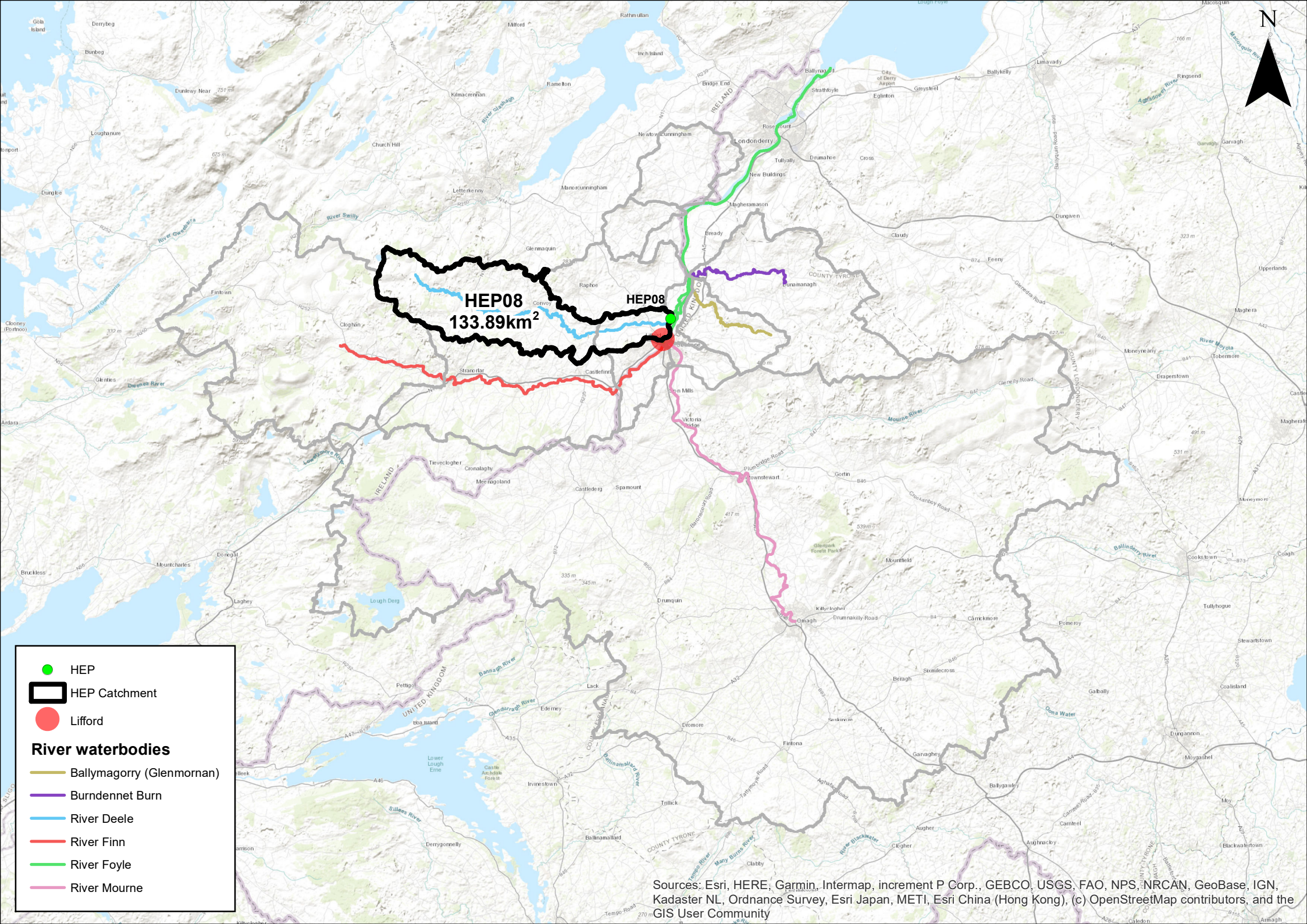


- HEP
- HEP Catchment
- Lifford

River waterbodies

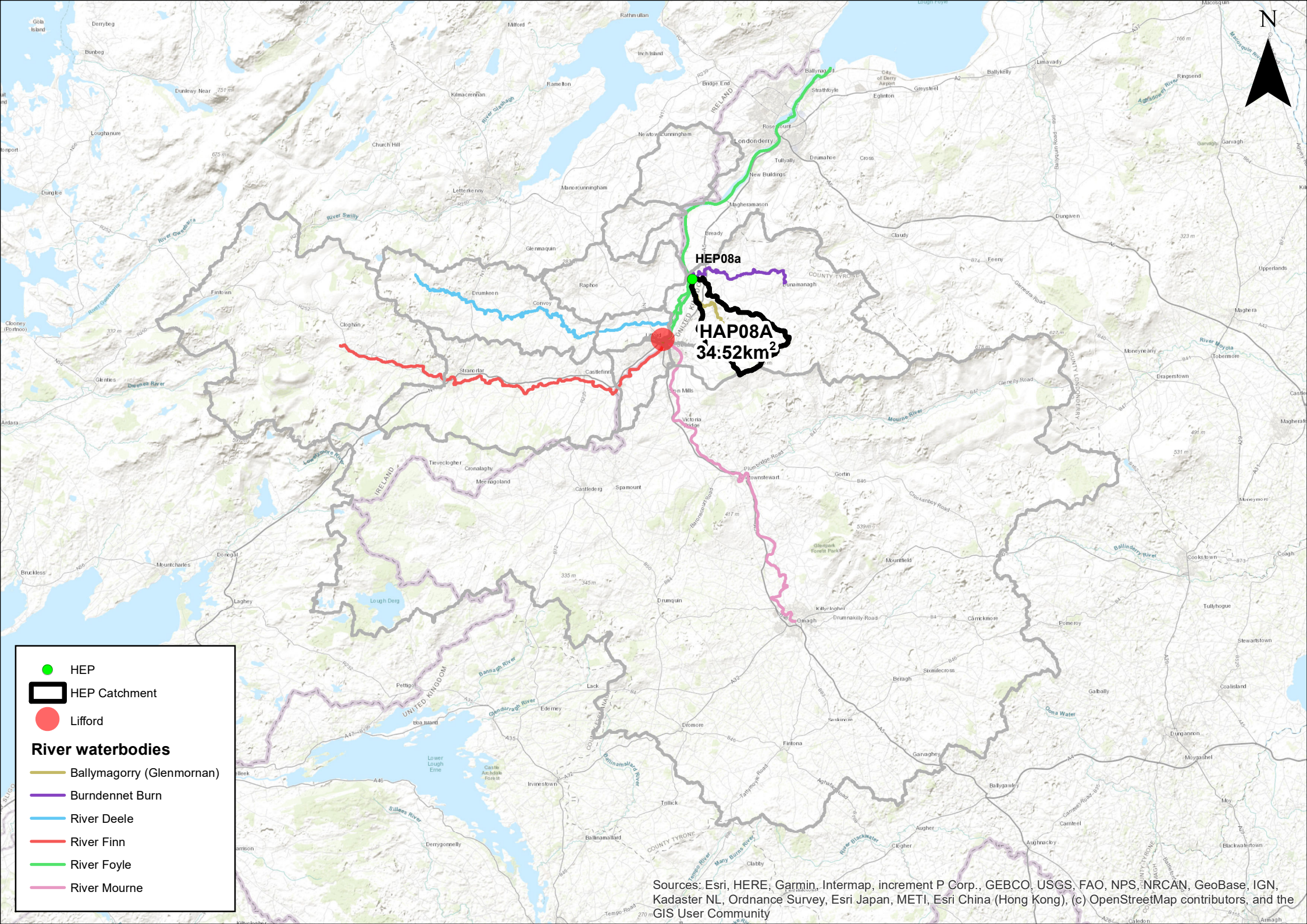
- Ballymagorry (Glenmornan)
- Burndennet Burn
- River Deele
- River Finn
- River Foyle
- River Mourne

Sources: Esri, HERE, Garmin, Intermap, increment P Corp., GEBCO, USGS, FAO, NPS, NRCAN, GeoBase, IGN, Kadaster NL, Ordnance Survey, Esri Japan, METI, Esri China (Hong Kong), (c) OpenStreetMap contributors, and the GIS User Community



- HEP
- ▭ HEP Catchment
- Lifford
- River waterbodies**
- Ballymagorry (Glenmornan)
- Bannadunet Burn
- River Deele
- River Finn
- River Foyle
- River Mourne

Sources: Esri, HERE, Garmin, Intermap, increment P Corp., GEBCO, USGS, FAO, NPS, NRCAN, GeoBase, IGN, Kadaster NL, Ordnance Survey, Esri Japan, METI, Esri China (Hong Kong), (c) OpenStreetMap contributors, and the GIS User Community

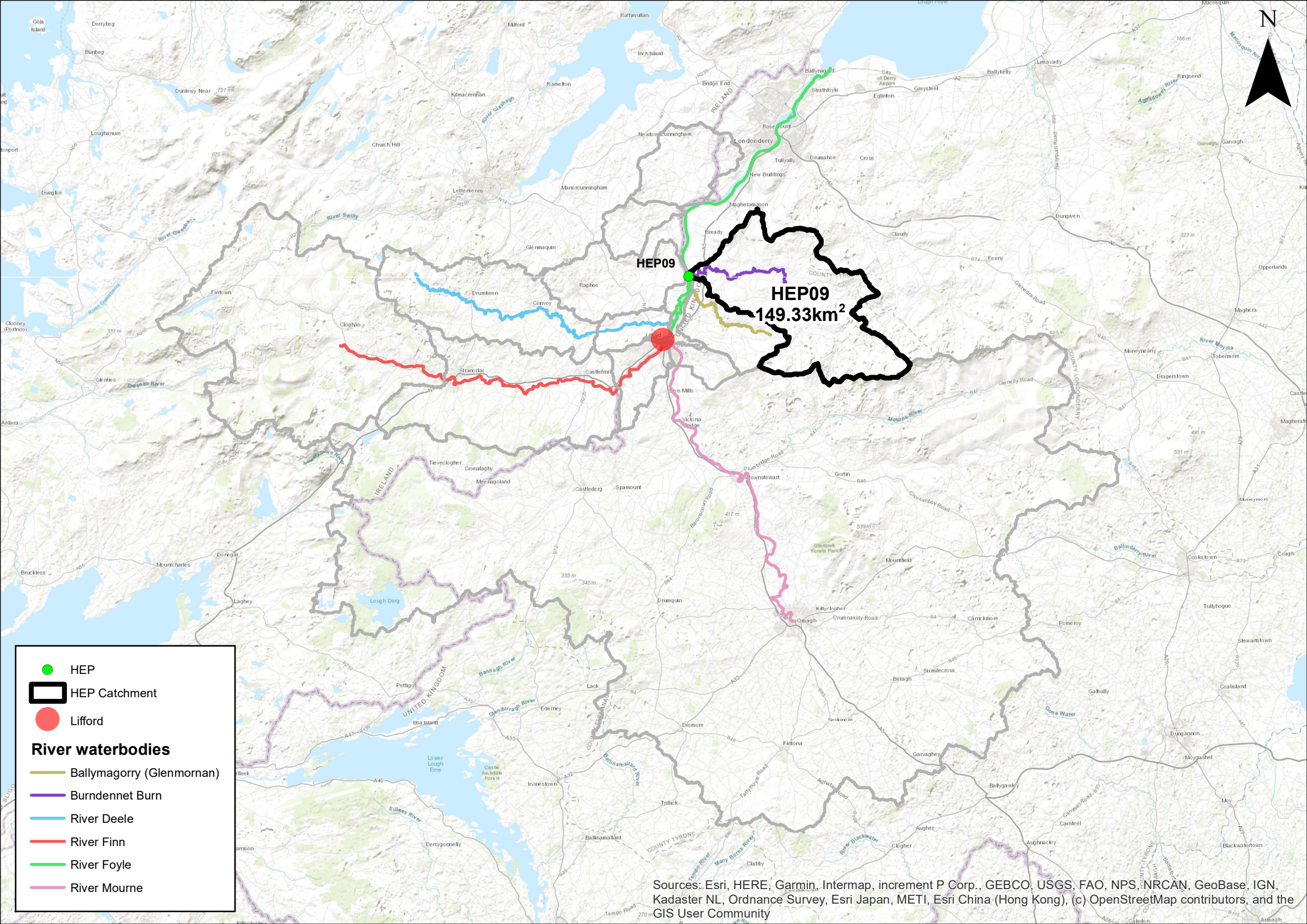


- HEP
- HEP Catchment
- Lifford

River waterbodies

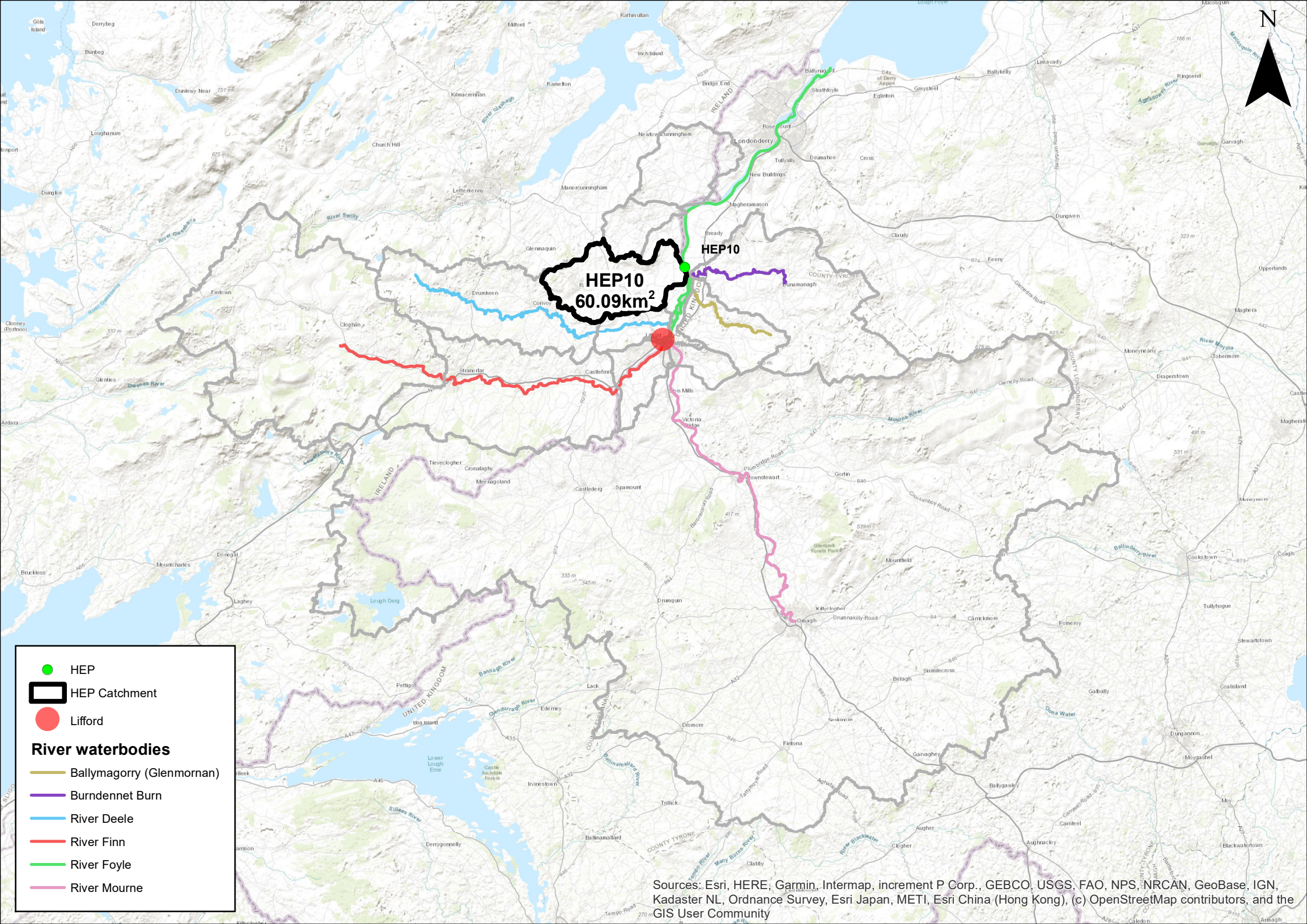
- Ballymagorry (Glenmornan)
- Burndennet Burn
- River Deele
- River Finn
- River Foyle
- River Mourne




Sources: Esri, HERE, Garmin, Intermap, increment P Corp., GEBCO, USGS, FAO, NPS, NRCAN, GeoBase, IGN, Kadaster NL, Ordnance Survey, Esri Japan, METI, Esri China (Hong Kong), (c) OpenStreetMap contributors, and the GIS User Community









- HEP
 - ▭ HEP Catchment
 - Lifford
- River waterbodies**
- Ballymagorry (Glenmornan)
 - Burndennet Burn
 - River Deele
 - River Finn
 - River Foyle
 - River Mourne

Sources: Esri, HERE, Garmin, Intermap, increment P Corp., GEBCO, USGS, FAO, NPS, NRCAN, GeoBase, IGN, Kadaster NL, Ordnance Survey, Esri Japan, METI, Esri China (Hong Kong), (c) OpenStreetMap contributors, and the GIS User Community

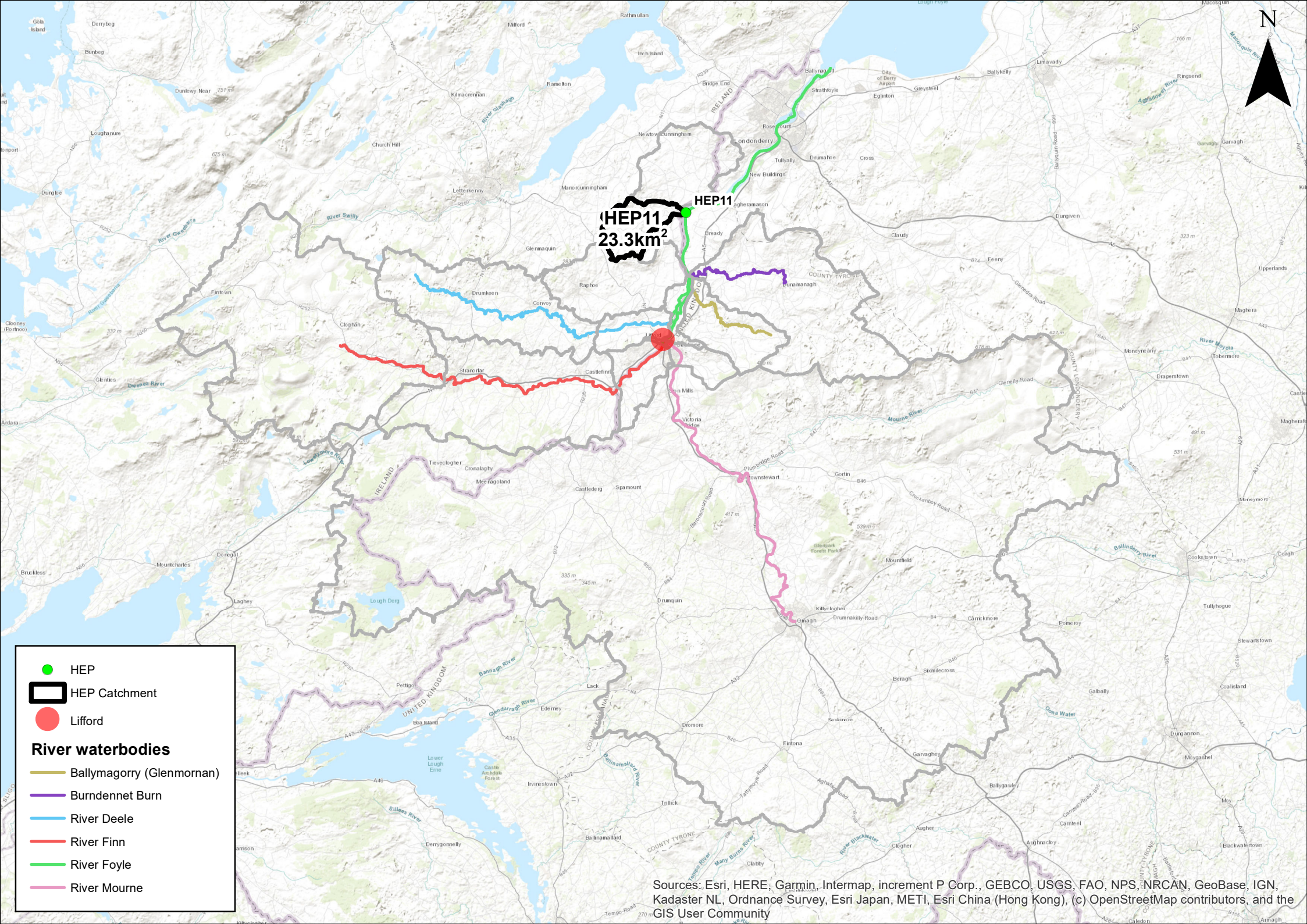





-  HEP
-  HEP Catchment
-  Lifford

River waterbodies







-  Ballymagorry (Glenmornan)
-  Burndennet Burn
-  River Deele
-  River Finn
-  River Foyle
-  River Mourne

Sources: Esri, HERE, Garmin, Intermap, increment P Corp., GEBCO, USGS, FAO, NPS, NRCAN, GeoBase, IGN, Kadaster NL, Ordnance Survey, Esri Japan, METI, Esri China (Hong Kong), (c) OpenStreetMap contributors, and the GIS User Community

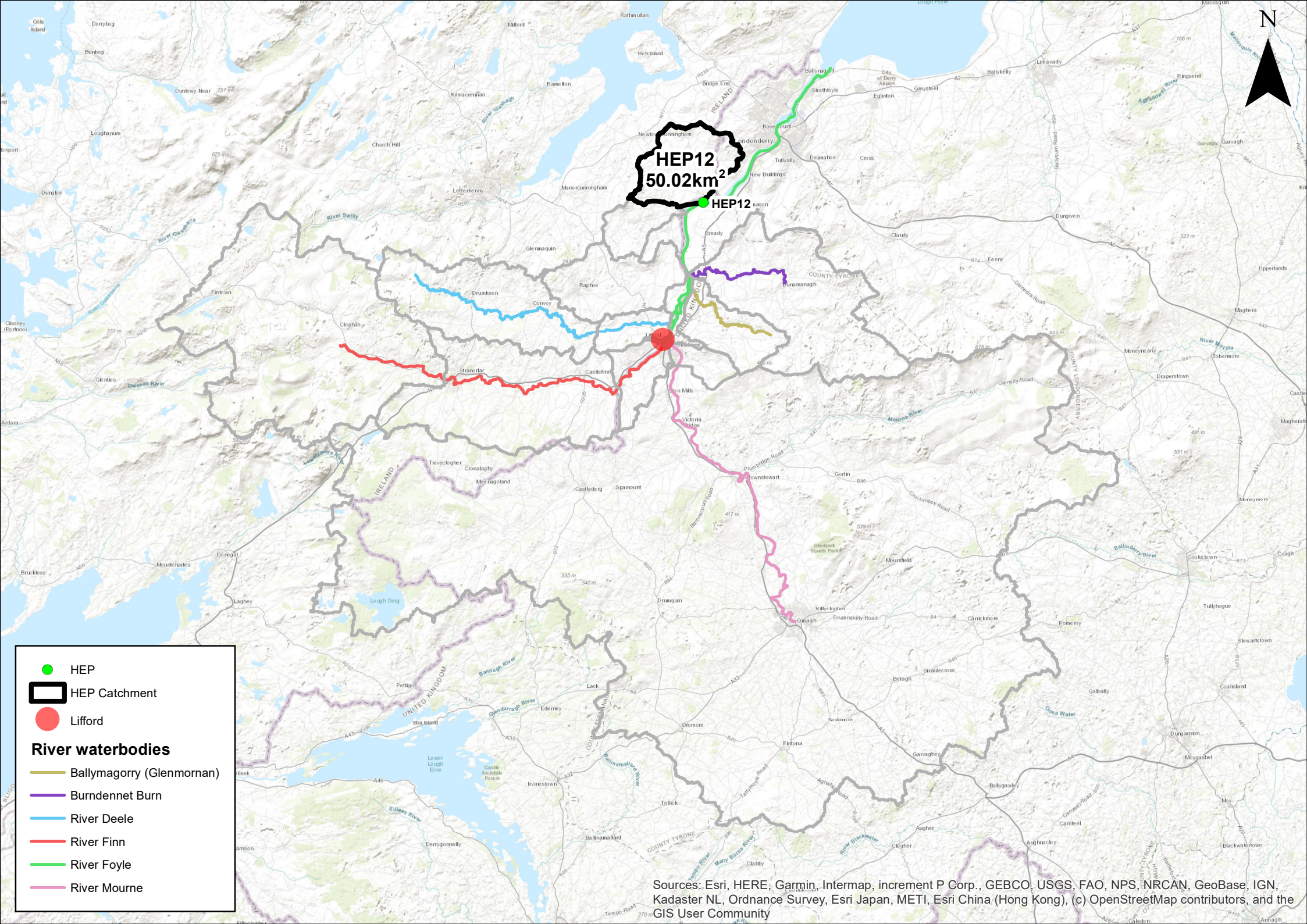


-  HEP
-  HEP Catchment
-  Lifford

River waterbodies

-  Ballymagorry (Glenmornan)
-  Burndennet Burn
-  River Deele
-  River Finn
-  River Foyle
-  River Mourne

HEP11
23.3km²



- HEP
- ▭ HEP Catchment
- Lifford

River waterbodies

- Ballymagorry (Glenmornan)
- Burndennet Burn
- River Deele
- River Finn
- River Foyle
- River Mourne

Sources: Esri, HERE, Garmin, Intermap, increment P Corp., GEBCO, USGS, FAO, NPS, NRCAN, GeoBase, IGN, Kadaster NL, Ordnance Survey, Esri Japan, METI, Esri China (Hong Kong), (c) OpenStreetMap contributors, and the GIS User Community